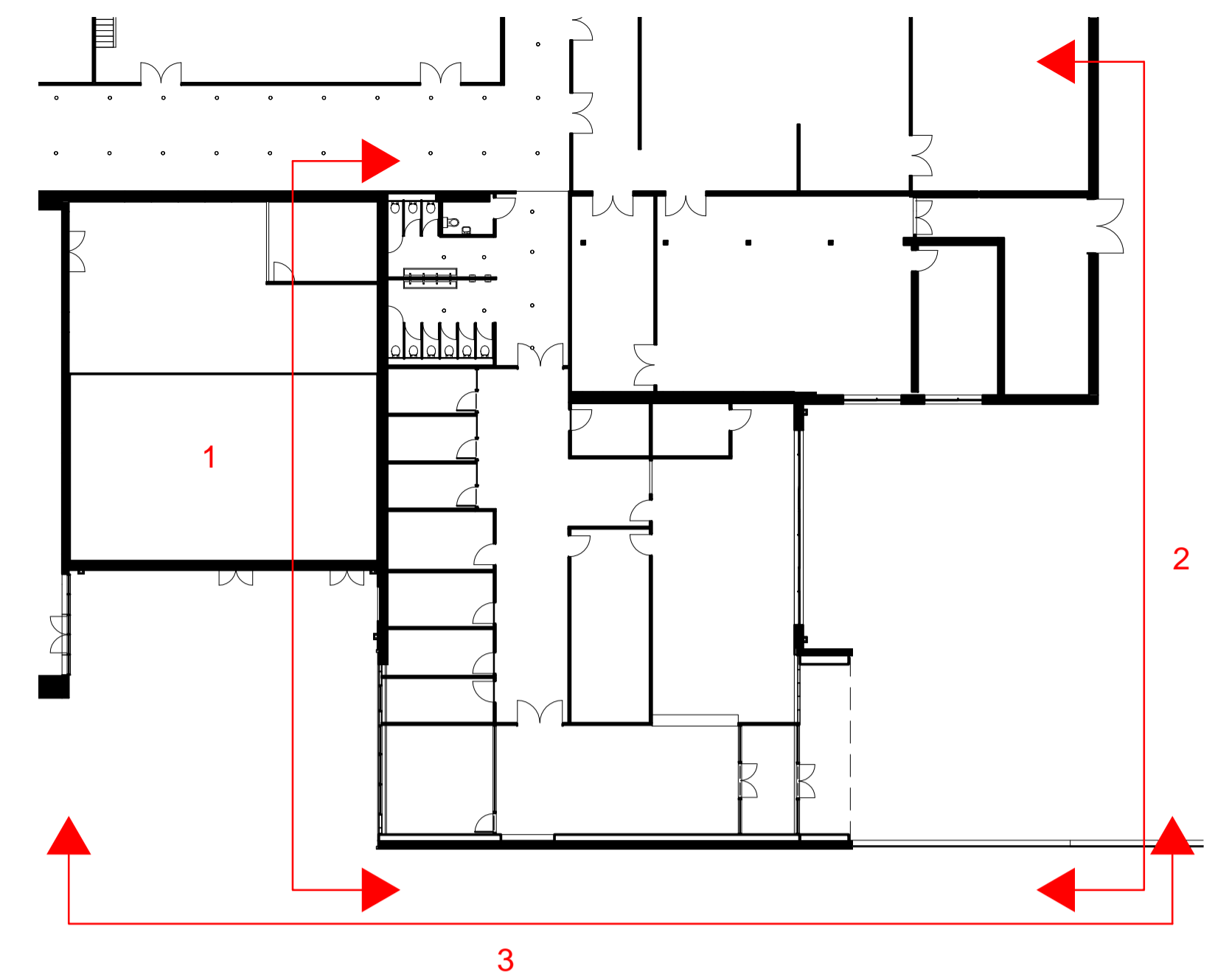
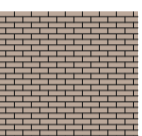



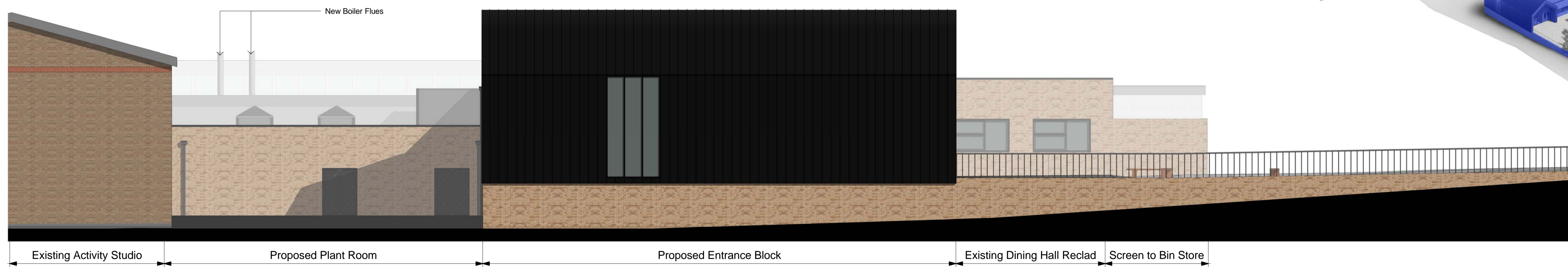
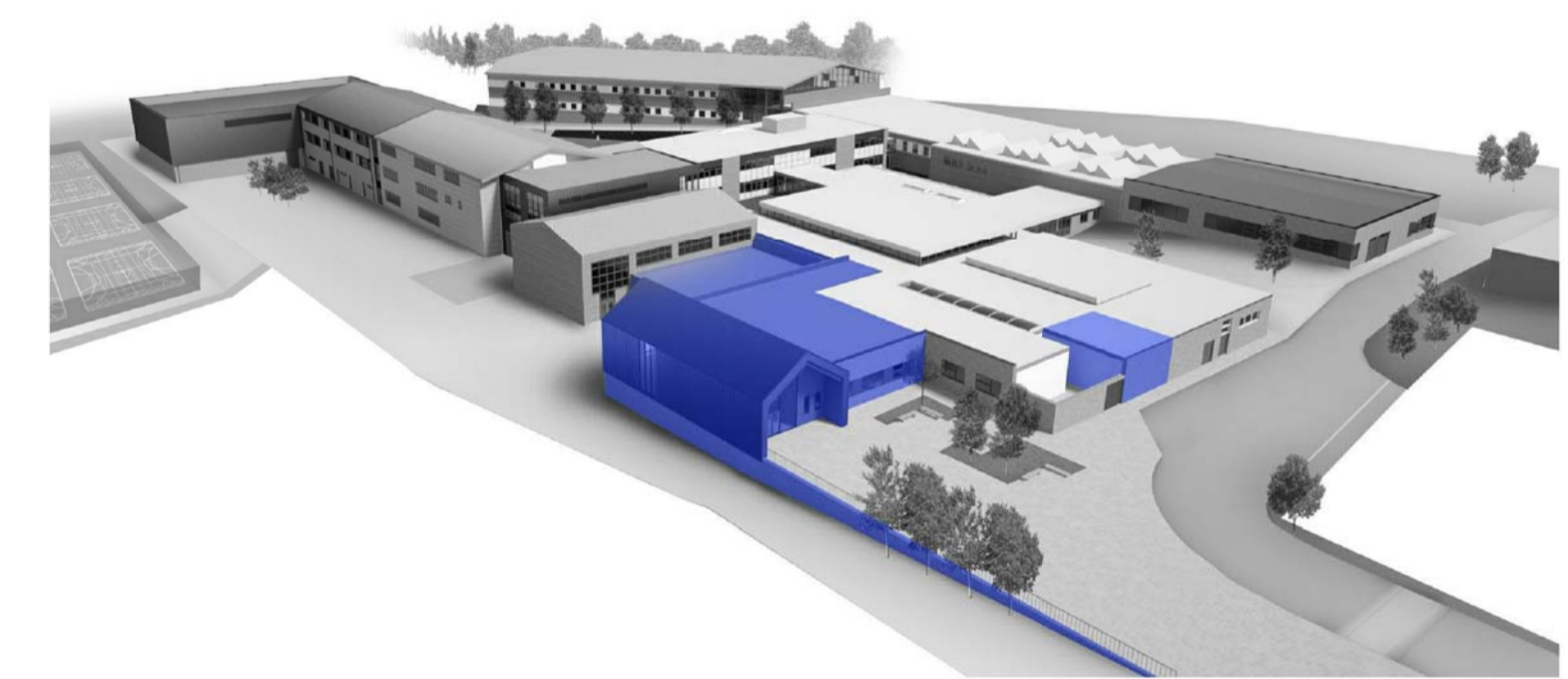


1 Entrance Block - West
1:100



2 Entrance Block - East
1:100

-  Brick
-  Insulated panel with Standing Seam Metal Finish
-  Glazing
-  Spandrel Panel



3 Entrance Block - South
1:100



Rev	Description	Drawn	Checked	Date Issued
01	Issued for Comment	MW		27/11/18
02	Approved Following Feedback from VDC	MW		13/12/18
03	Stage 2 Draft Issue	MW		11/01/19
04	PAC Issue	MW		25/01/19

DO NOT SCALE. Use figured dimensions only. The contractor is requested to check all dimensions before the work is put in hand. © All copyrights Austin-Smith Lord LLP. This drawing must only be used for the purpose for which it is supplied and its contents must not be reproduced for any purpose without written permission. No areas indicated, or areas calculated from this drawing should be used for valuation purposes or as the basis for development contracts. Austin-Smith Lord LLP is a limited liability partnership registered in England & Wales. Number: 06315362

Drawn	MW	Austin-Smith:Lord LLP Architects Designers Planners Landscape Architects Port Of Liverpool Building Pier Head, Liverpool L3 1BY t +44 (0)151 227 1083
Date	JAN 2019	
Scale @ A1	As Indicated	
Status	S2	e liverpool@austinsmithlord.com Drawings and models generated by Austin-Smith Lord LLP BIM using Autodesk Revit

Austin-Smith:Lord
Project Ysgol Bro Morgannwg

Description Proposed Entrance Block Elevations		
Job No.	Drawing No.	Revision P4
318052	YBM-ASL-10-ZZ-DR-A-0251	