
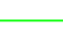
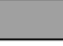



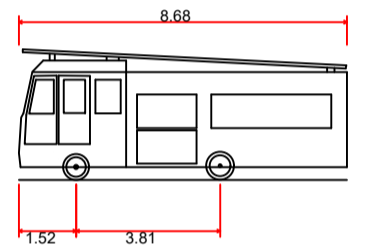
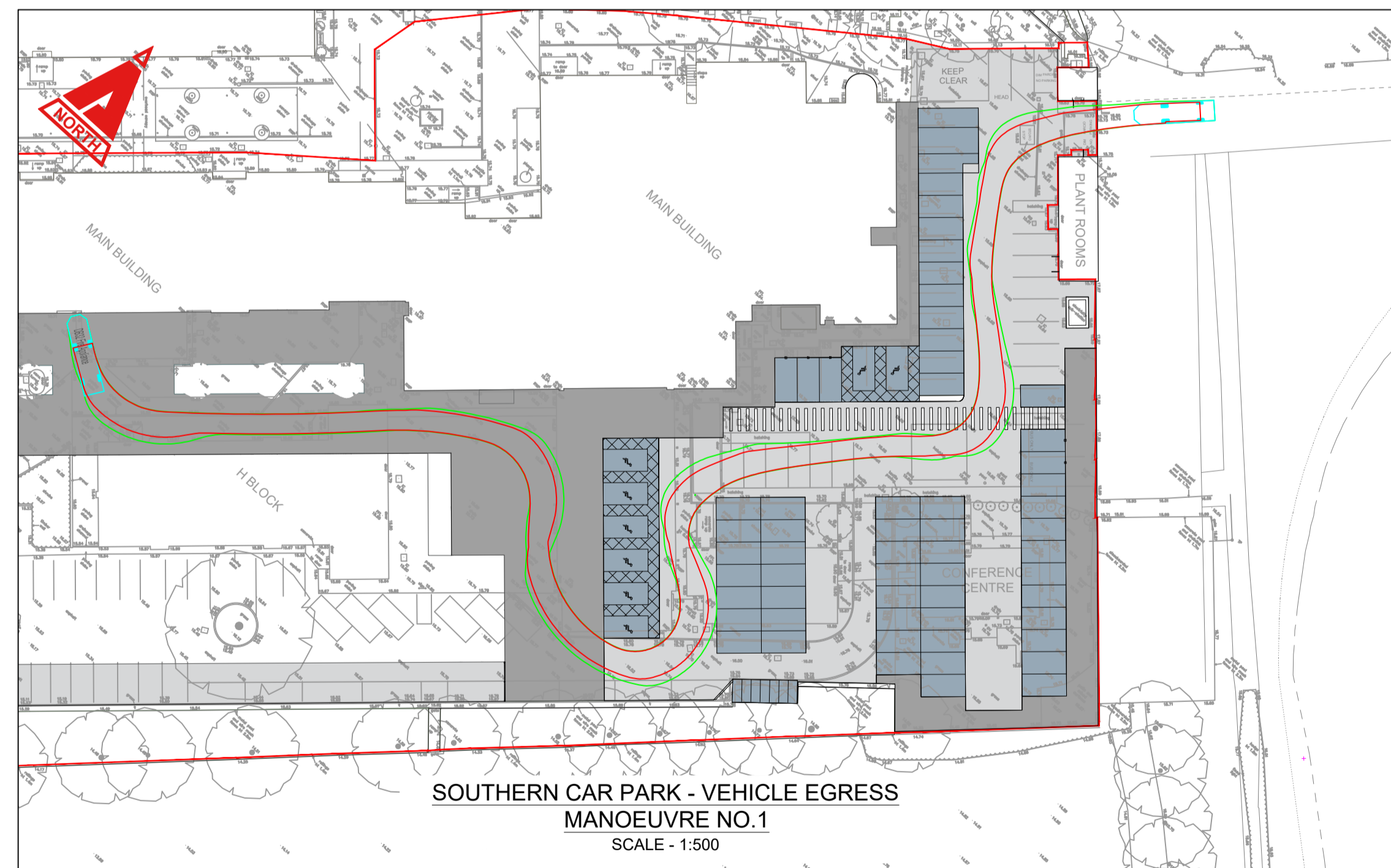
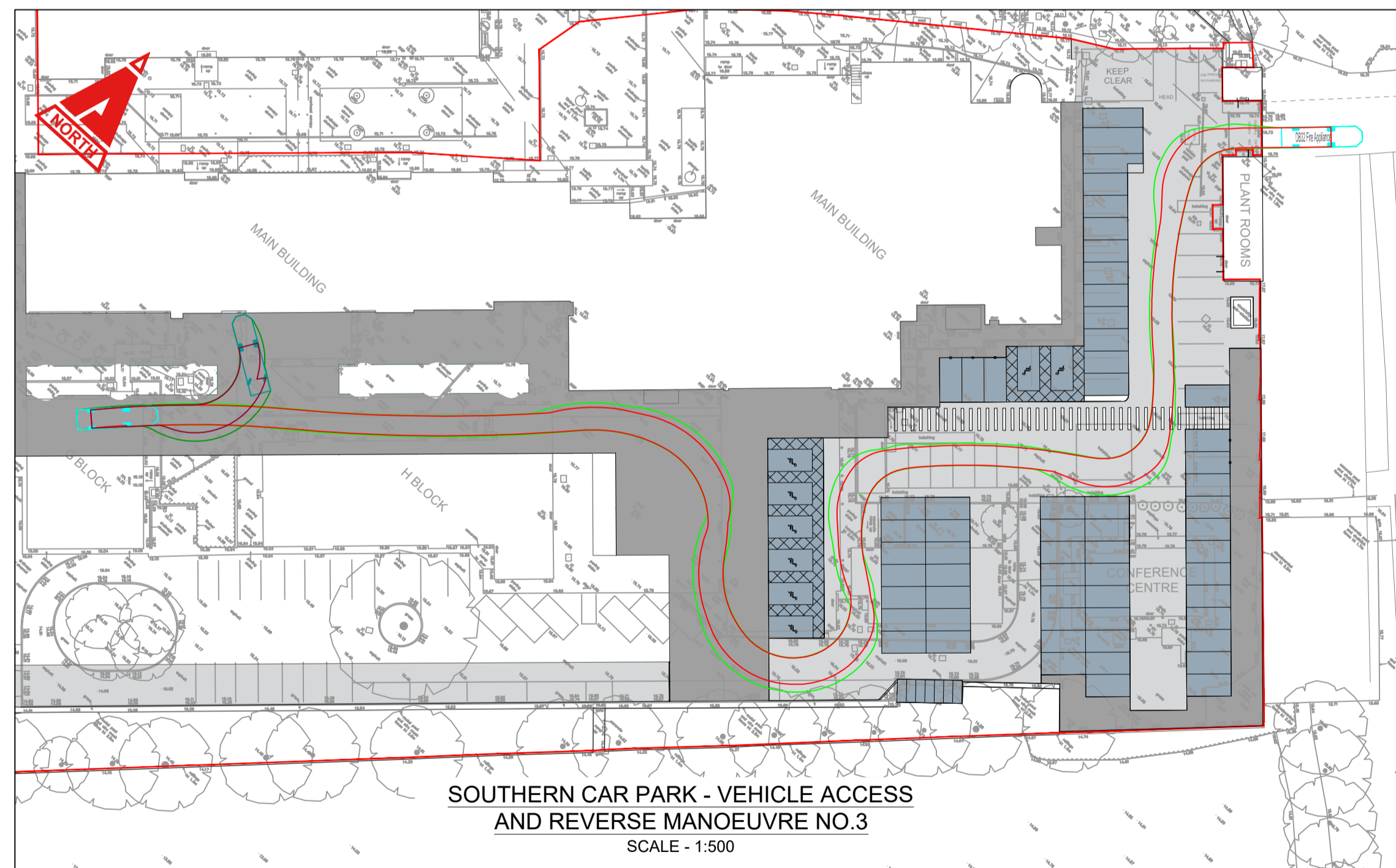
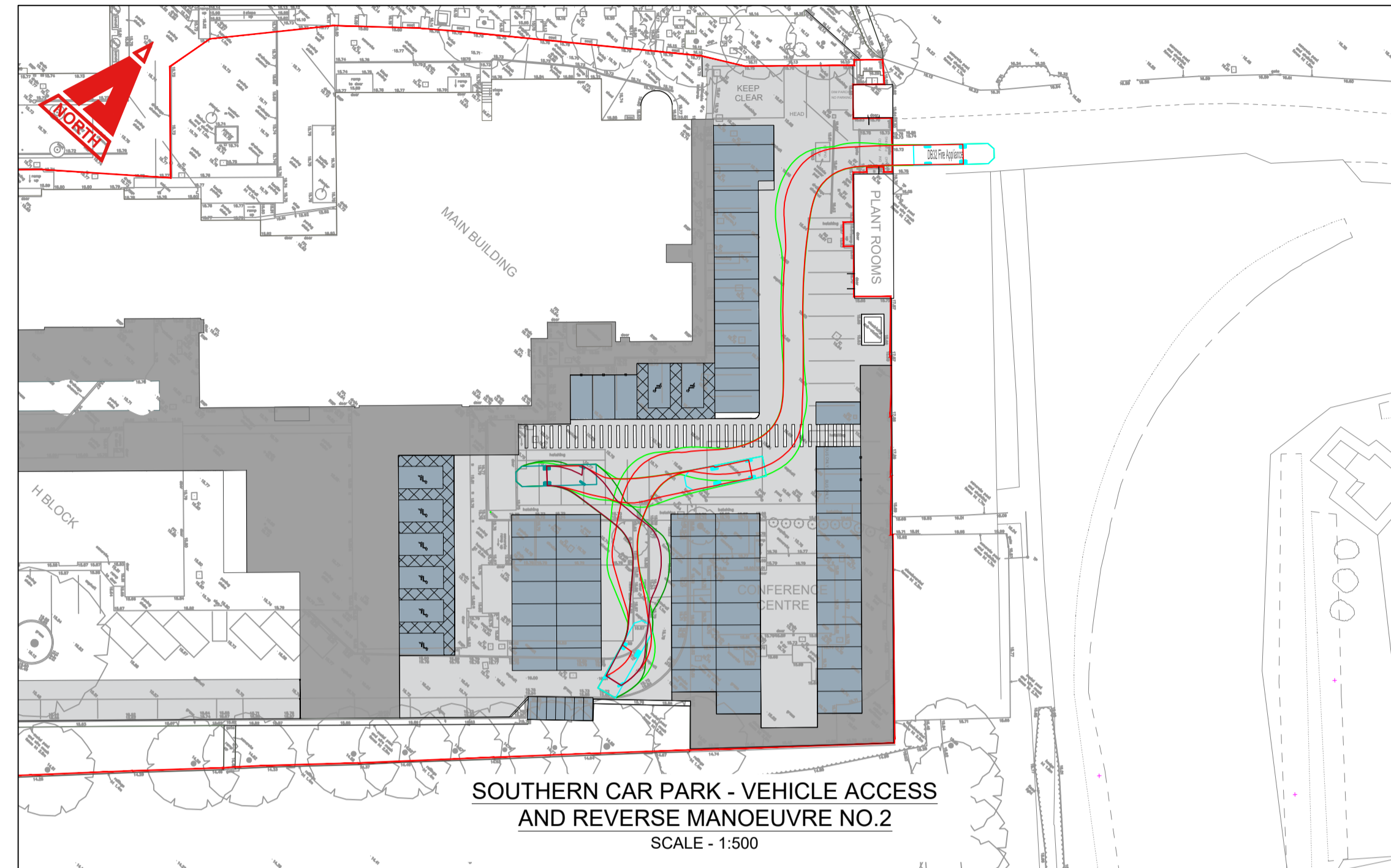
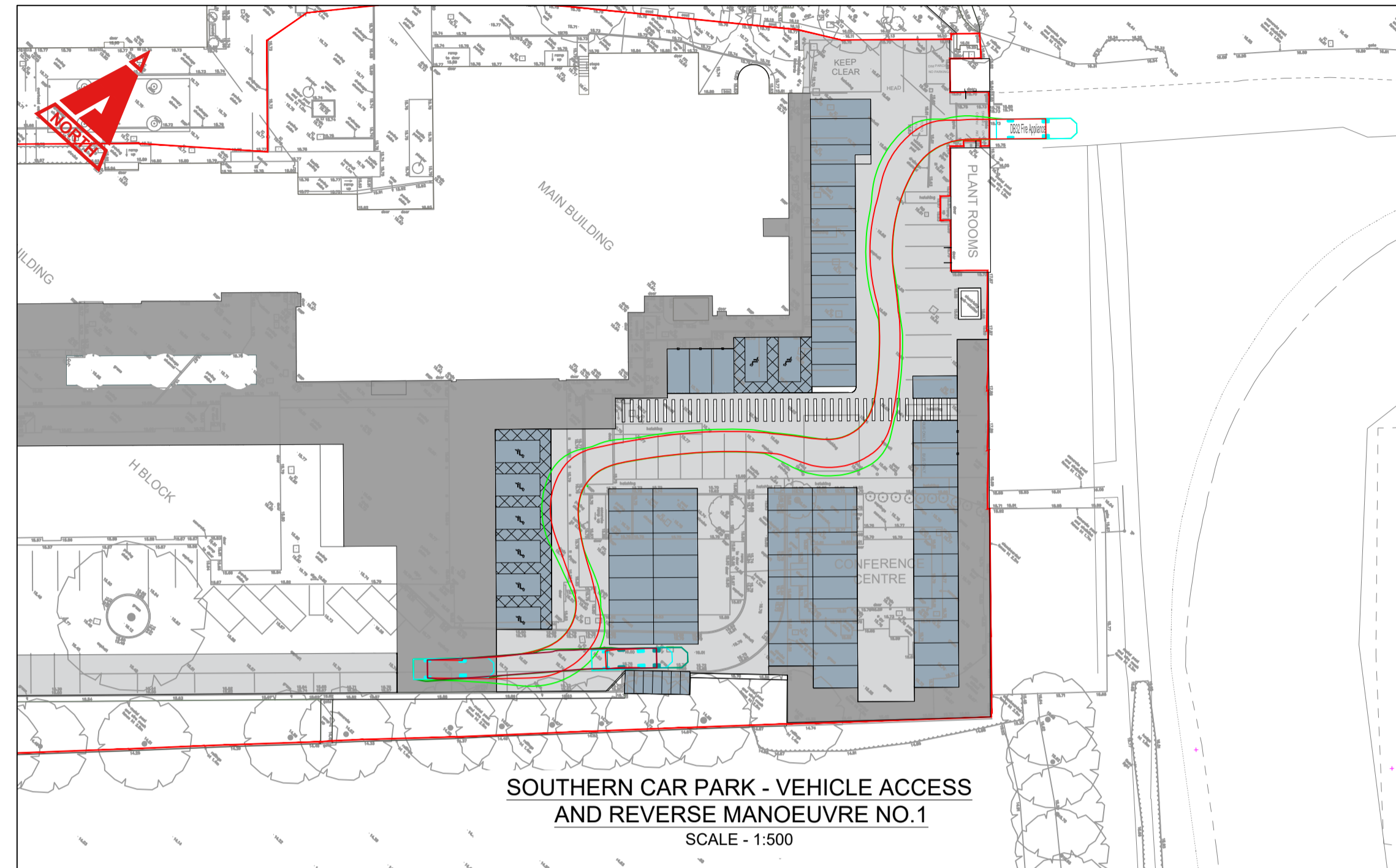


- KEY**
-  CHASIS OUTLINE
 -  OVERHANG OUTLINE
 -  FOOTPATH SURFACING
 -  CARRIAGEWAY SURFACING
 -  PERMEABLE SURFACING
 -  SITE BOUNDARY



DB32 Fire Appliance
 Overall Length 8.680m
 Overall Width 2.180m
 Overall Body Height 3.452m
 Min Body Ground Clearance 0.337m
 Max Track Width 2.121m
 Lock to lock time 6.00s
 Kerb to Kerb Turning Radius 7.916m



P1	FIRST ISSUE	GJ	RJ	RJ
Rev.	Description	By	Chk	App
				18.07.2024



Project:
CAERLEON SCHOOL

Drawing Title:
**VEHICLE TRACKING
FIRE APPLIANCE
SHEET 2**

Drawing No.
CB2183 CAM XX ZZ DR C 0201

Status:	Scale @A1:	Rev.
S2 PRELIMINARY	1:500	P1

CAMBRIA
 Constructive Thinking

Civil & Structural Engineers T 0117 911 3333
 Ground Floor, E admin@cambria.co.uk
 Building 350, W www.cambria.co.uk
 Bristol Business Park, @cambriauk
 Bristol, BS16 1EJ uk.linkedin.com/in/cambriauk