

NOTES
 Check all dimensions on site. Do not scale from this drawing.
 Report any discrepancies and omissions to HLM Architects.
 This Drawing is Copyright ©

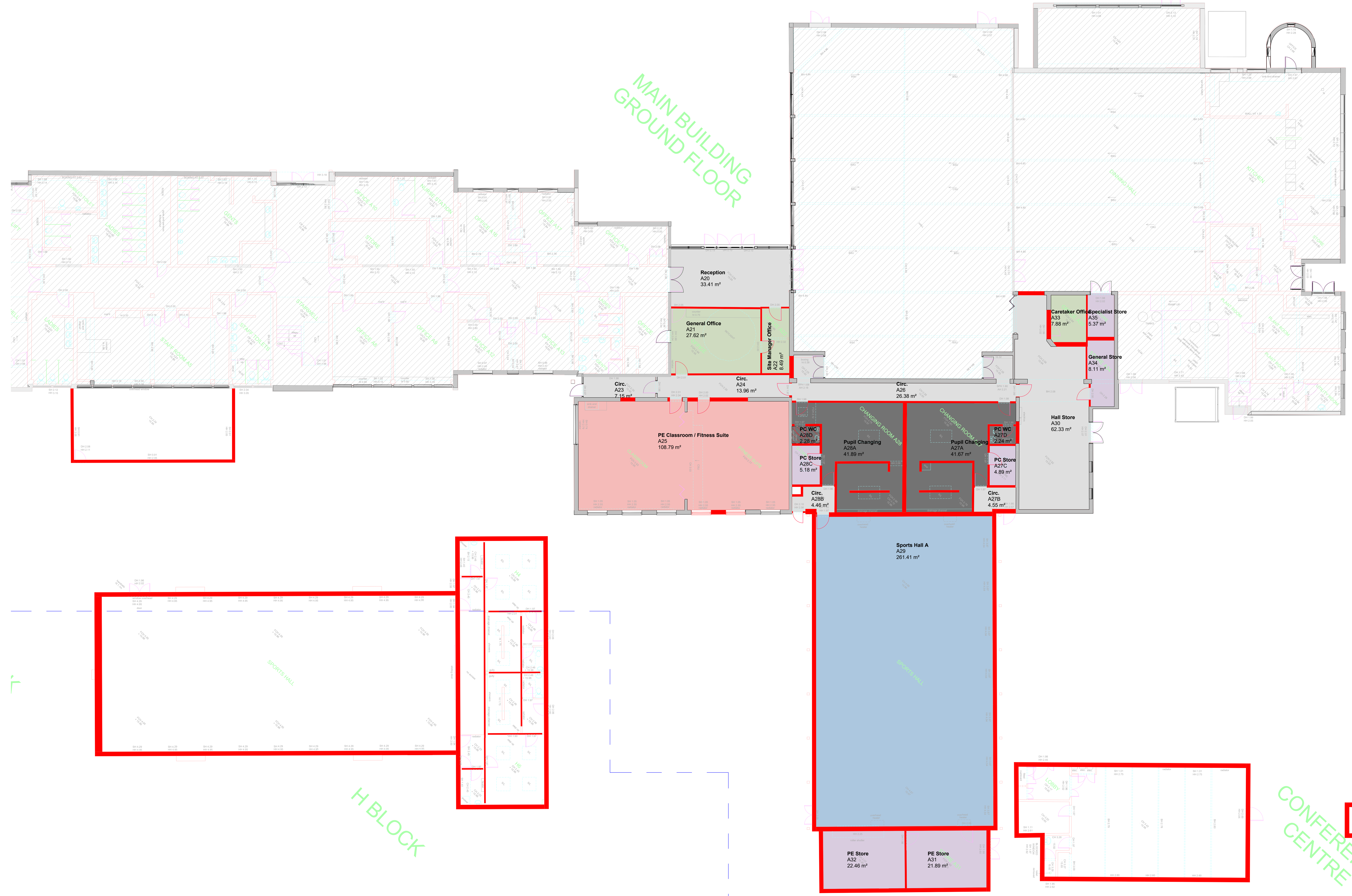
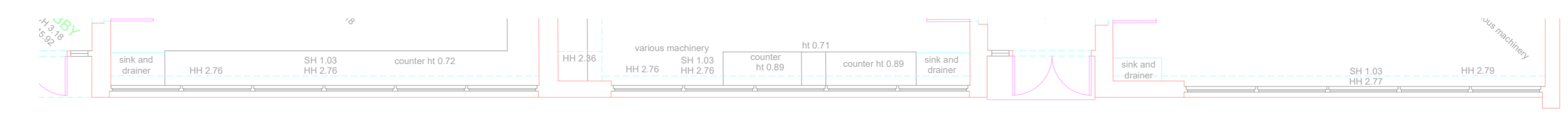
DESIGN/SKETCH DESIGN
 Unless stated otherwise, the designs shown are subject to detailed site survey, investigations, and legal definition, the CDM Regulations, and the comments and / or approval of the various relevant Local Authority Officers, Statutory Undertakers, Fire Officers, Engineers and the like. They are copyright, project specific and confidential and no part is to be used or copied in any way without the express prior consent of HLM Architects.

PHOTOCOPIED/SCANNED INFORMATION
 NB This drawing is based on photocopied / scanned information liable to distortion in scale.

AREA CALCULATIONS
 NB The areas shown are approximate only and have been measured off preliminary drawings as the likely areas at the current stage of design using the scaled option from the Code of Measuring Practice, 4th edition. RICS/JISA. These may be affected by future design development and construction tolerances, or the result of surveys for existing buildings. Take account of these factors before planning any financial or property development purpose or strategy and seek confirmation of latest area before decision making.

3RD-PARTY INFORMATION
 NB This drawing includes information provided by independent surveyors and/or consultants, to whom all queries shall be made. HLM Architects can accept no liability for its content or accuracy.

- Wall Renovation**
- Existing
 - To be Demolished
- DEPARTMENT**
- CIRCULATION
 - HALLS
 - STAFF
 - STORES
 - WC SUITES
 - PLANT



Revisions	Description	Date	By	CHK	Suitability
P09	PAC	03.05.2025	JM	AMS	
P08	FIRST ISSUE STAGE 3 ISSUE	06.03.2025	JM	AMS	
P07	ISSUED FOR PRE-APP	12.06.2024	JM	AMS	
P06	UPDATED TO REVISED BRIEF	26.01.2024	AMS	JM	
P05	STAGE 2 ISSUE	06.05.2021	AMS	GW	
P04	ISSUED TO CONSULTANTS WITH UPDATED NEWBUILDING BRIEF	25.02.2021	AMS	GW	
P03	UPDATED FOLLOWING CONFIRMATION OF ROOM USES	08.09.2020	AMS	GW	
P02	UPDATED FOR BRE VENT	11.08.2020	AMS	GW	
P01	PRELIMINARY ISSUE FOR COMMENT	29.02.2020	AMS	GW	
Rev	Description	Date	By	CHK	

Carleoon Comprehensive School - New Building

Client
NEWPORT CITY COUNCIL / NEWPORT NORSE

Title
Block A - Ground Floor Plan - Existing

Drawing No.	Revision
CCS-HLM-AA-00-DR-A-00101	P09

Scale	Drawn
As indicated @A0	JM
Date	Checked
03.05.2025	AMS

