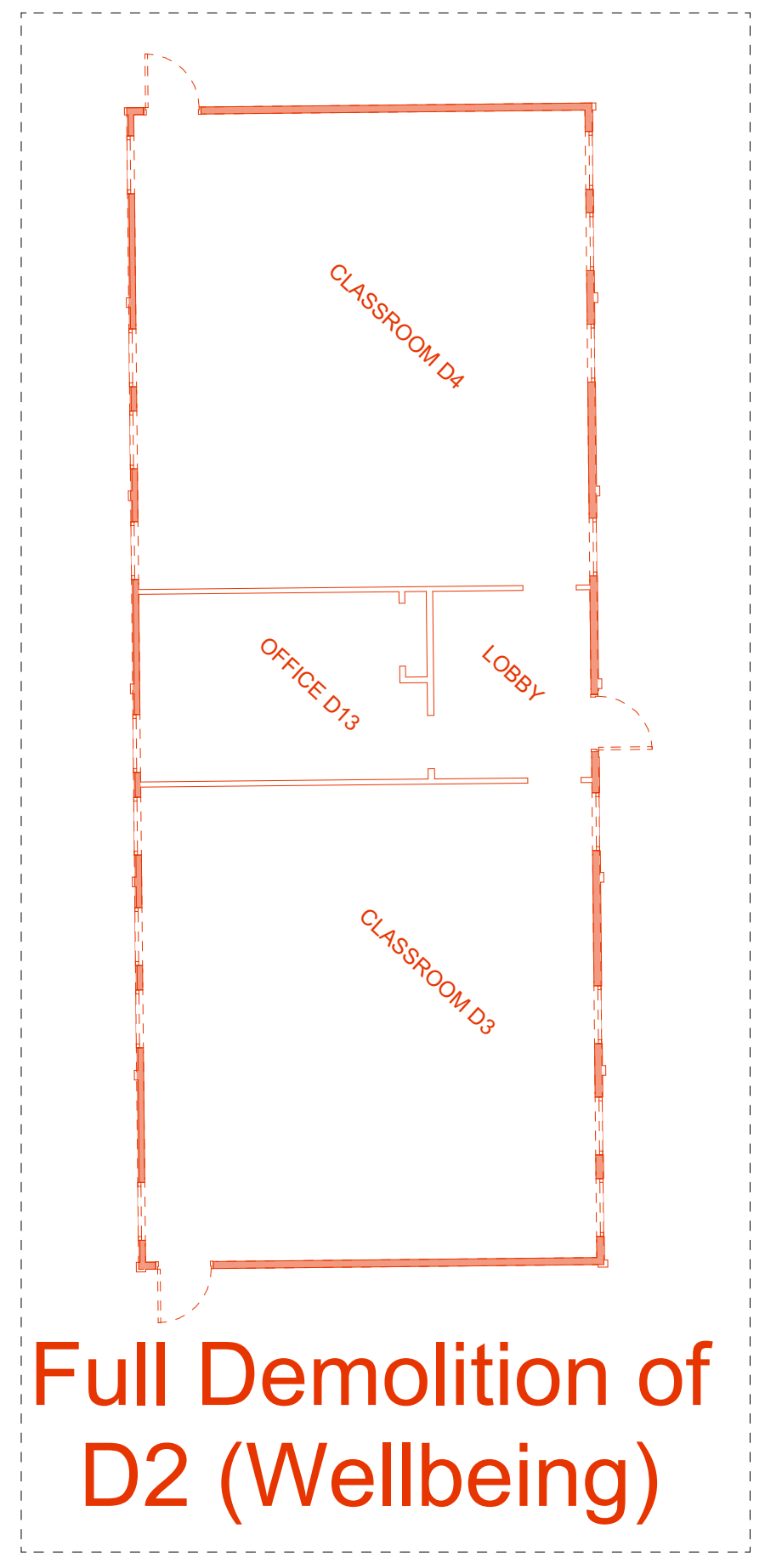
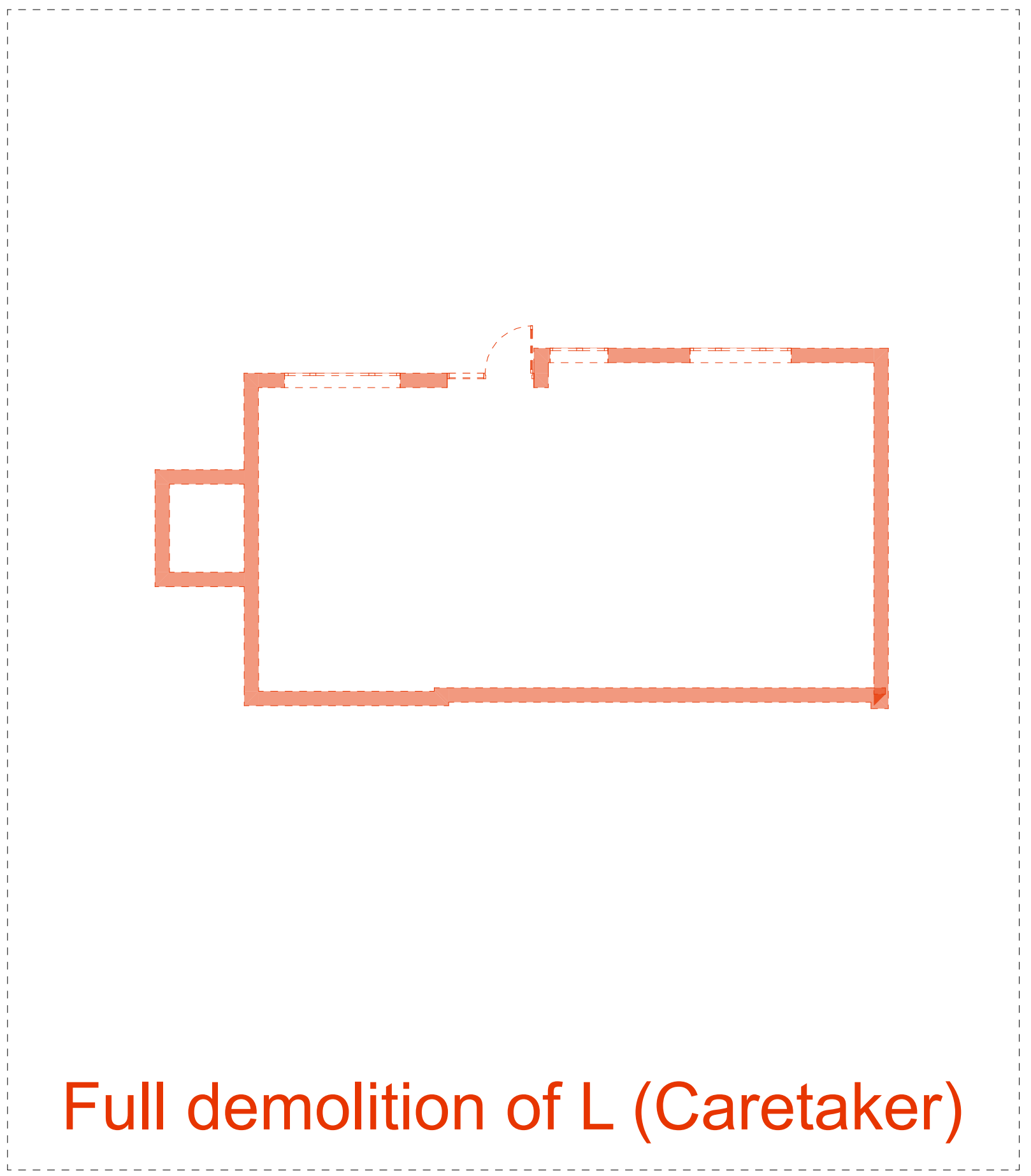


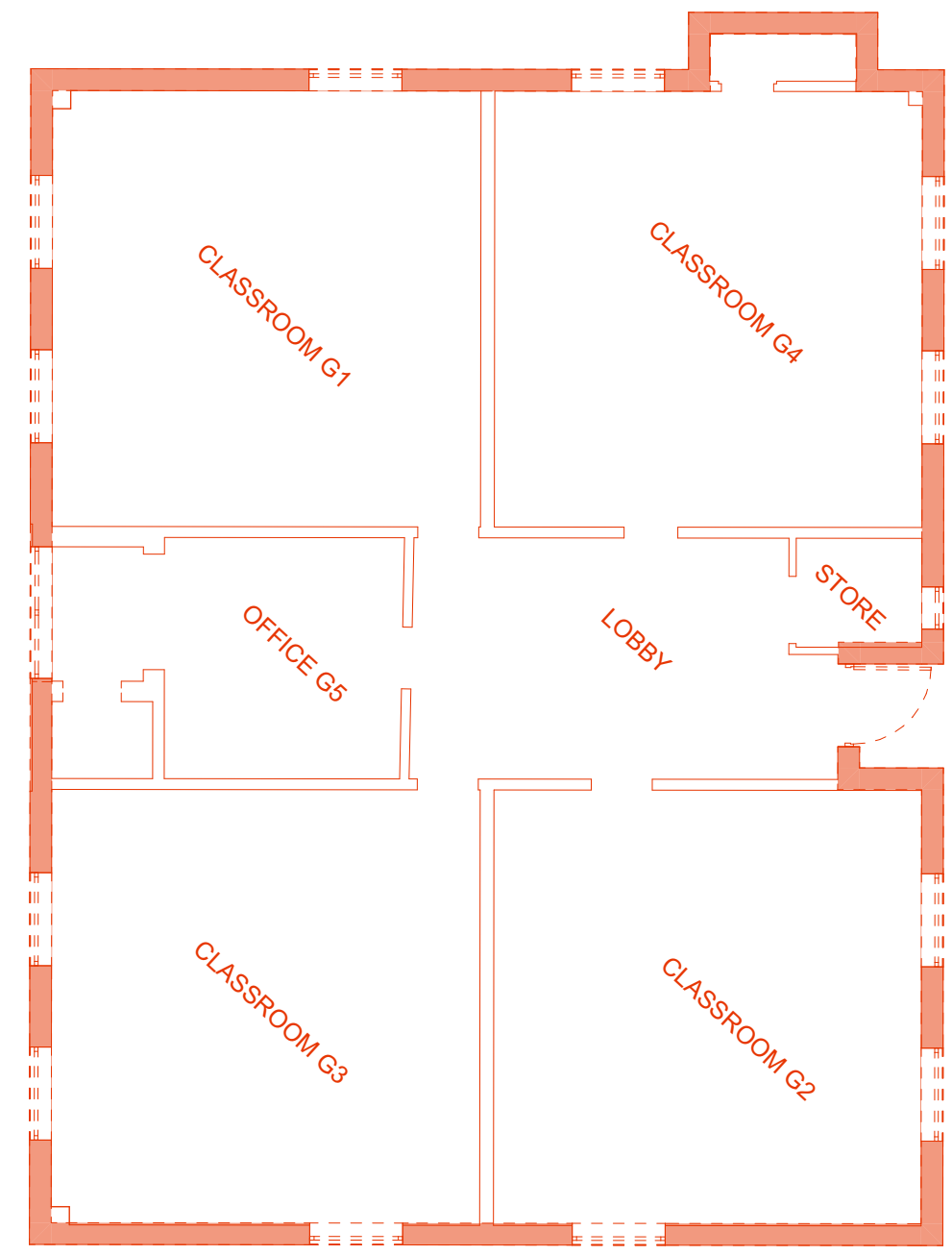
Full Demolition of D1 (Drama)



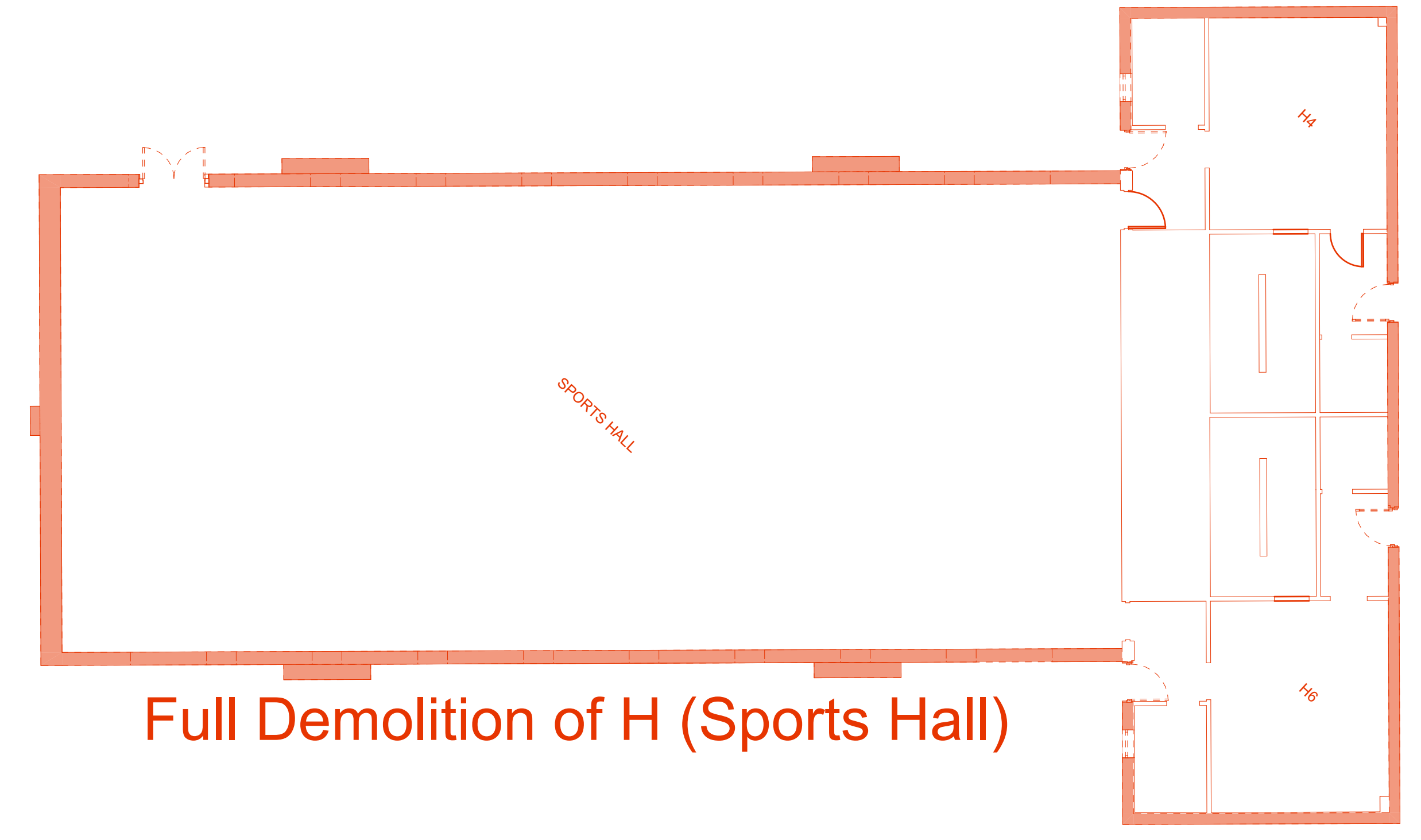
Full Demolition of D2 (Wellbeing)



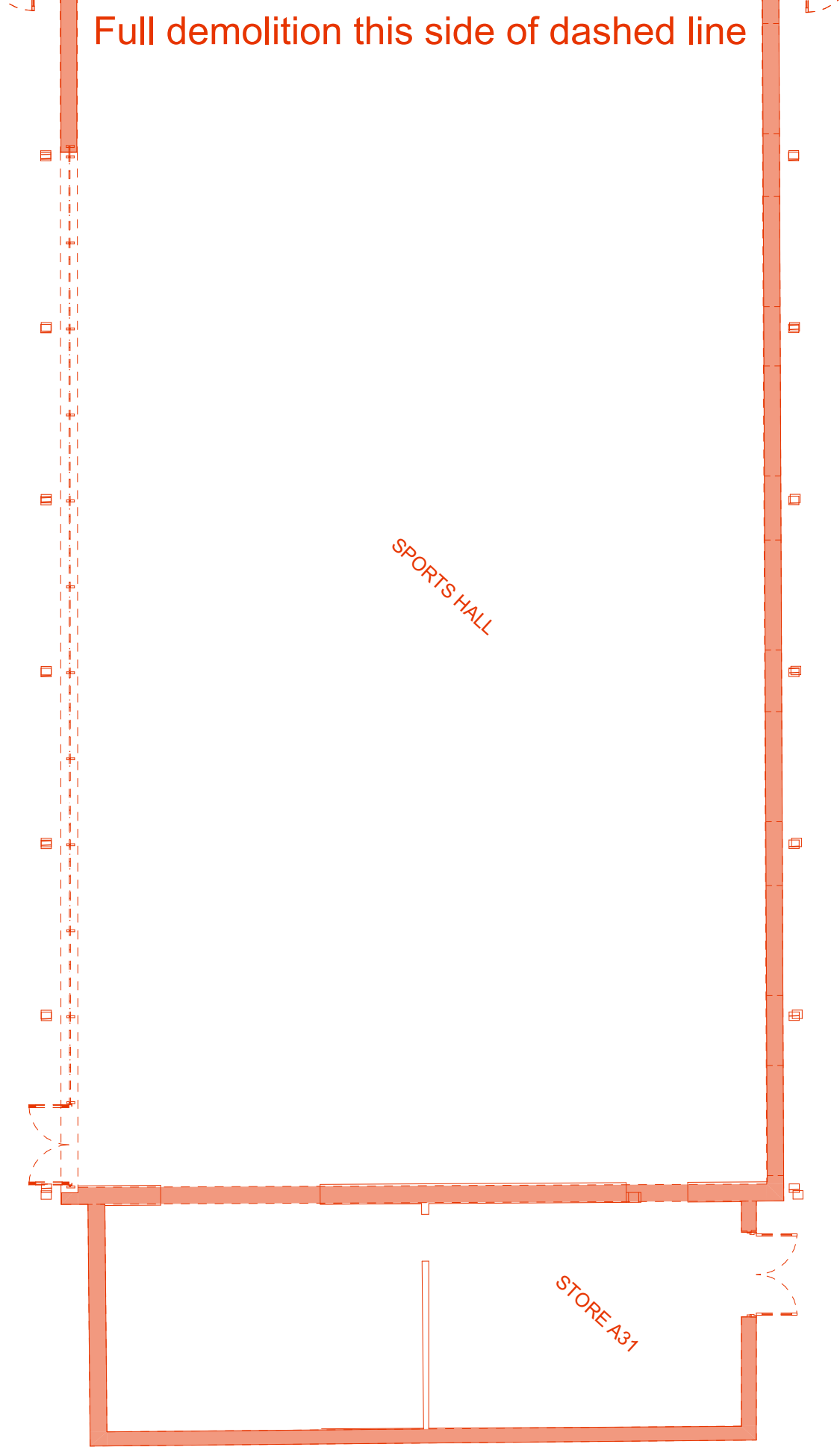
Full demolition of L (Caretaker)



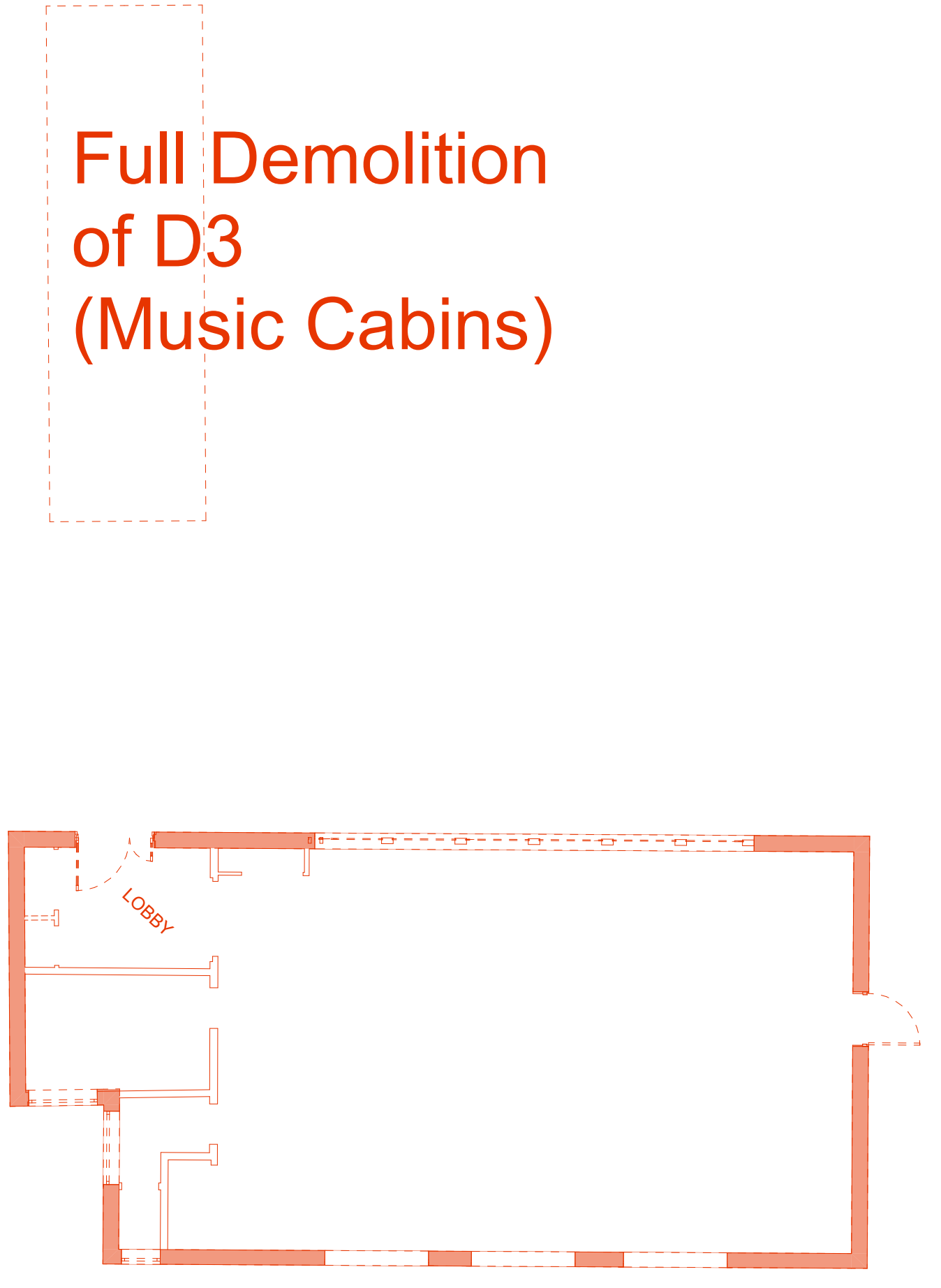
Full demolition of G



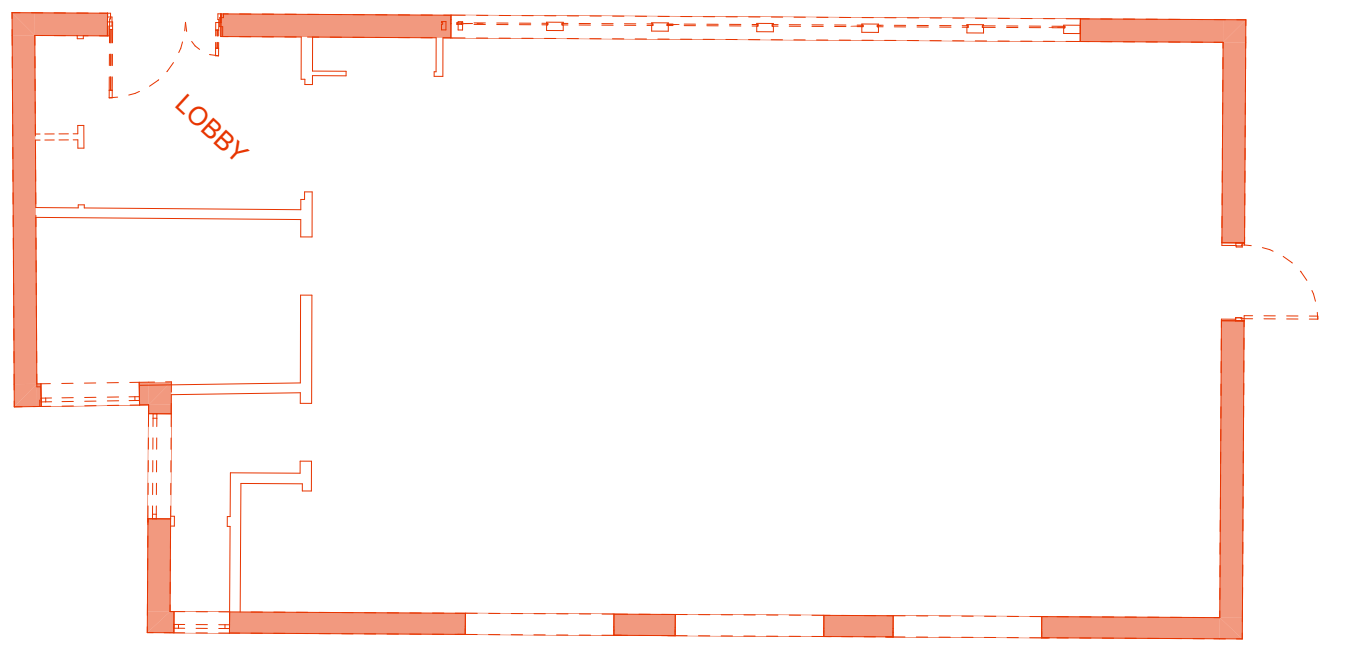
Full Demolition of H (Sports Hall)



Partial Demolition of block A (sports hall)



Full Demolition of D3 (Music Cabins)



Full Demolition of K (Conference)

Rev. No.	Issue for Percep	12.06.2024	AMS	JM
Rev. Description				
Revisions				Stability
Project				S3
<b>15-1135-01</b>				
Client	Ysgol Gyfun Caerleon Comprehensive School			
NEWPORT CITY COUNCIL YSGOLION YR 21AIN GANRIF 21st Century Schools		norse Casnewydd Llywodraeth Cymru Welsh Government		
<b>Demolition Plan</b>				
Drawing No.	CCS-HLM-ZZ-00-DR-A-10101	Revision	P01	
Scale @ A0	1:100	Drawn	AMS	
Date	12.06.2024	Checked	JM	