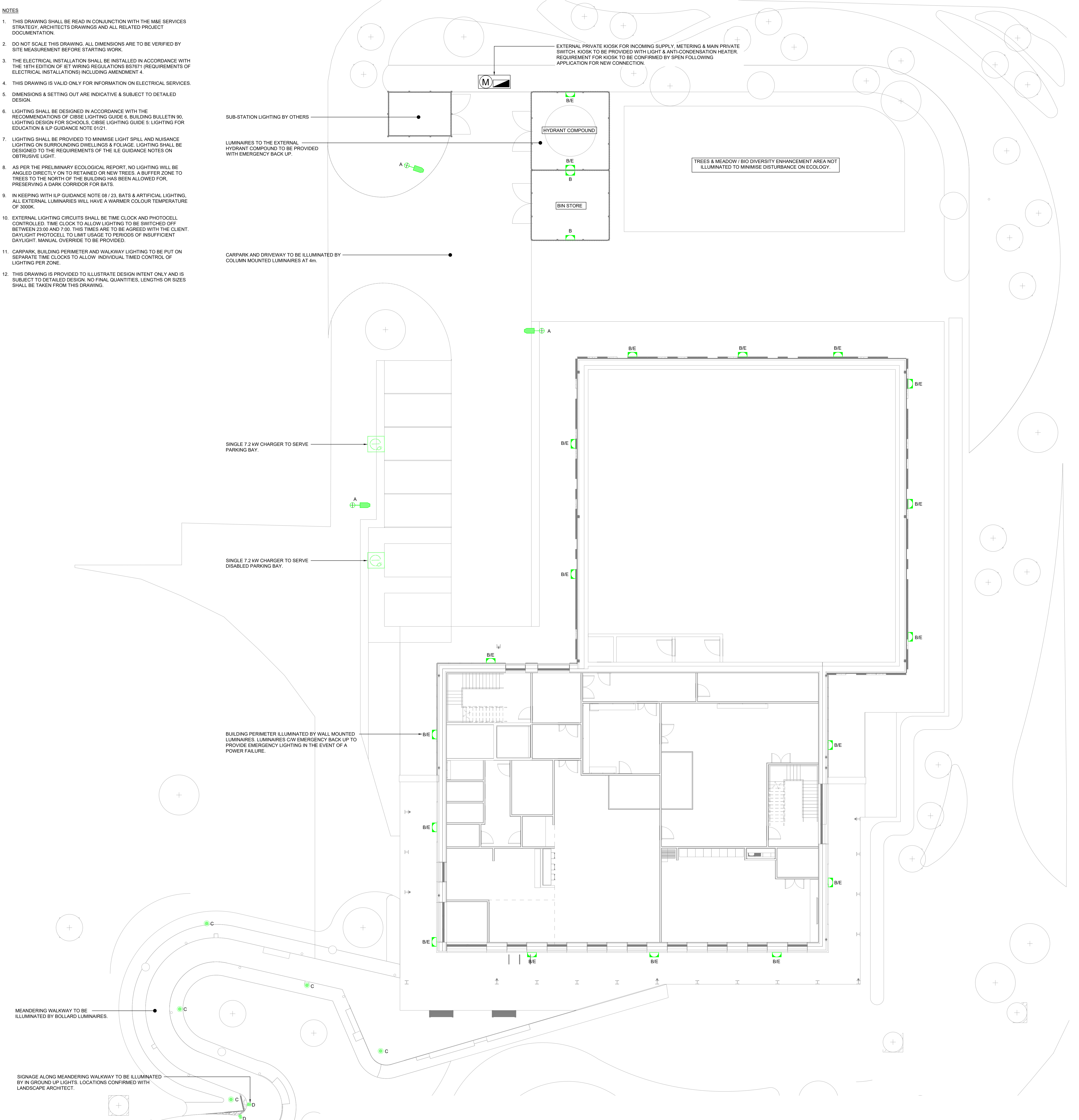


**NOTES**

- THIS DRAWING SHALL BE READ IN CONJUNCTION WITH THE M&E SERVICES STRATEGY, ARCHITECTS DRAWINGS AND ALL RELATED PROJECT DOCUMENTATION.
- DO NOT SCALE THIS DRAWING. ALL DIMENSIONS ARE TO BE VERIFIED BY SITE MEASUREMENT BEFORE STARTING WORK.
- THE ELECTRICAL INSTALLATION SHALL BE INSTALLED IN ACCORDANCE WITH THE 18TH EDITION OF IET WIRING REGULATIONS BS7671 (REQUIREMENTS OF ELECTRICAL INSTALLATIONS) INCLUDING AMENDMENT 4.
- THIS DRAWING IS VALID ONLY FOR INFORMATION ON ELECTRICAL SERVICES.
- DIMENSIONS & SETTING OUT ARE INDICATIVE & SUBJECT TO DETAILED DESIGN.
- LIGHTING SHALL BE DESIGNED IN ACCORDANCE WITH THE RECOMMENDATIONS OF CIBSE LIGHTING GUIDE 6, BUILDING BULLETIN 90, LIGHTING DESIGN FOR SCHOOLS, CIBSE LIGHTING GUIDE 5, LIGHTING FOR EDUCATION & I/P GUIDANCE NOTE 01/21.
- LIGHTING SHALL BE PROVIDED TO MINIMISE LIGHT SPILL AND NUISANCE LIGHTING ON SURROUNDING DWELLINGS & FOLIAGE. LIGHTING SHALL BE DESIGNED TO THE REQUIREMENTS OF THE ILE GUIDANCE NOTES ON OBTRUSIVE LIGHT.
- AS PER THE PRELIMINARY ECOLOGICAL REPORT, NO LIGHTING WILL BE ANGLED DIRECTLY ON TO RETAINED OR NEW TREES. A BUFFER ZONE TO TREES TO THE NORTH OF THE BUILDING HAS BEEN ALLOWED FOR, PRESERVING A DARK CORRIDOR FOR BATS.
- IN KEEPING WITH I/P GUIDANCE NOTE 08 / 23, BATS & ARTIFICIAL LIGHTING, ALL EXTERNAL LUMINAIRES WILL HAVE A WARMER COLOUR TEMPERATURE OF 3000K.
- EXTERNAL LIGHTING CIRCUITS SHALL BE TIME CLOCK AND PHOTOCELL CONTROLLED. TIME CLOCK TO ALLOW LIGHTING TO BE SWITCHED OFF BETWEEN 23.00 AND 7.00. THIS TIMES ARE TO BE AGREED WITH THE CLIENT. DAYLIGHT PHOTOCELL TO LIMIT USAGE TO PERIODS OF INSUFFICIENT DAYLIGHT. MANUAL OVERRIDE TO BE PROVIDED.
- CARPARK, BUILDING PERIMETER AND WALKWAY LIGHTING TO BE PUT ON SEPARATE TIME CLOCKS TO ALLOW INDIVIDUAL TIMED CONTROL OF LIGHTING PER ZONE.
- THIS DRAWING IS PROVIDED TO ILLUSTRATE DESIGN INTENT ONLY AND IS SUBJECT TO DETAILED DESIGN. NO FINAL QUANTITIES, LENGTHS OR SIZES SHALL BE TAKEN FROM THIS DRAWING.



**LUMINAIRE SCHEDULE**

MANUFACTURER	DESCRIPTION	IMAGE	REF	MH	ICON
URBIS SCHREDER	URBIS TOPIA HIGH PERFORMANCE AREA OPTIC LED POST TOP LUMINAIRE FOR ILLUMINATION CAR PARK		A	4m	
URBIS SCHREDER	URBIS WALL MOUNTED AREA LED LUMINAIRE, TO PROVIDE LIGHTING TO BUILDING PERIMETER WALKWAY.		B	3.5m	
URBIS SCHREDER	URBIS WINCHESTER MUSHROOM LED BOLLARD, TO PROVIDE LIGHTING TO MEANDERING WALKWAY.		C	1m	
URBIS SCHREDER	NEO35 LED UP-LIGHT, TO PROVIDE LIGHTING TO SIGNAGE ALONG MEANDERING WALKWAY.		D	IG	

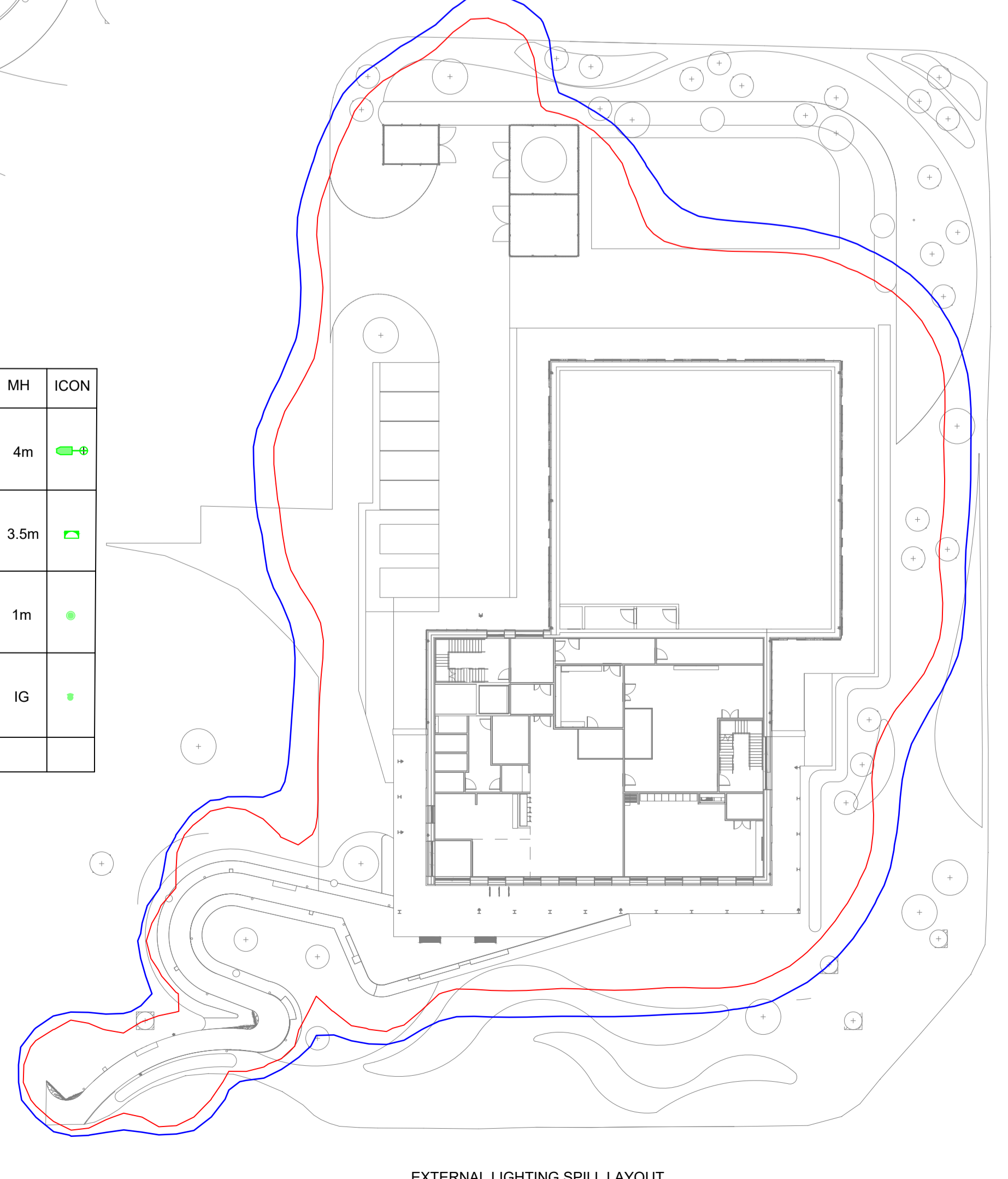
\*E\* DENOTES LUMINAIRE C/W 3HR EMERGENCY BATTERY PACK

**EXTERNAL LIGHTING LEVELS**

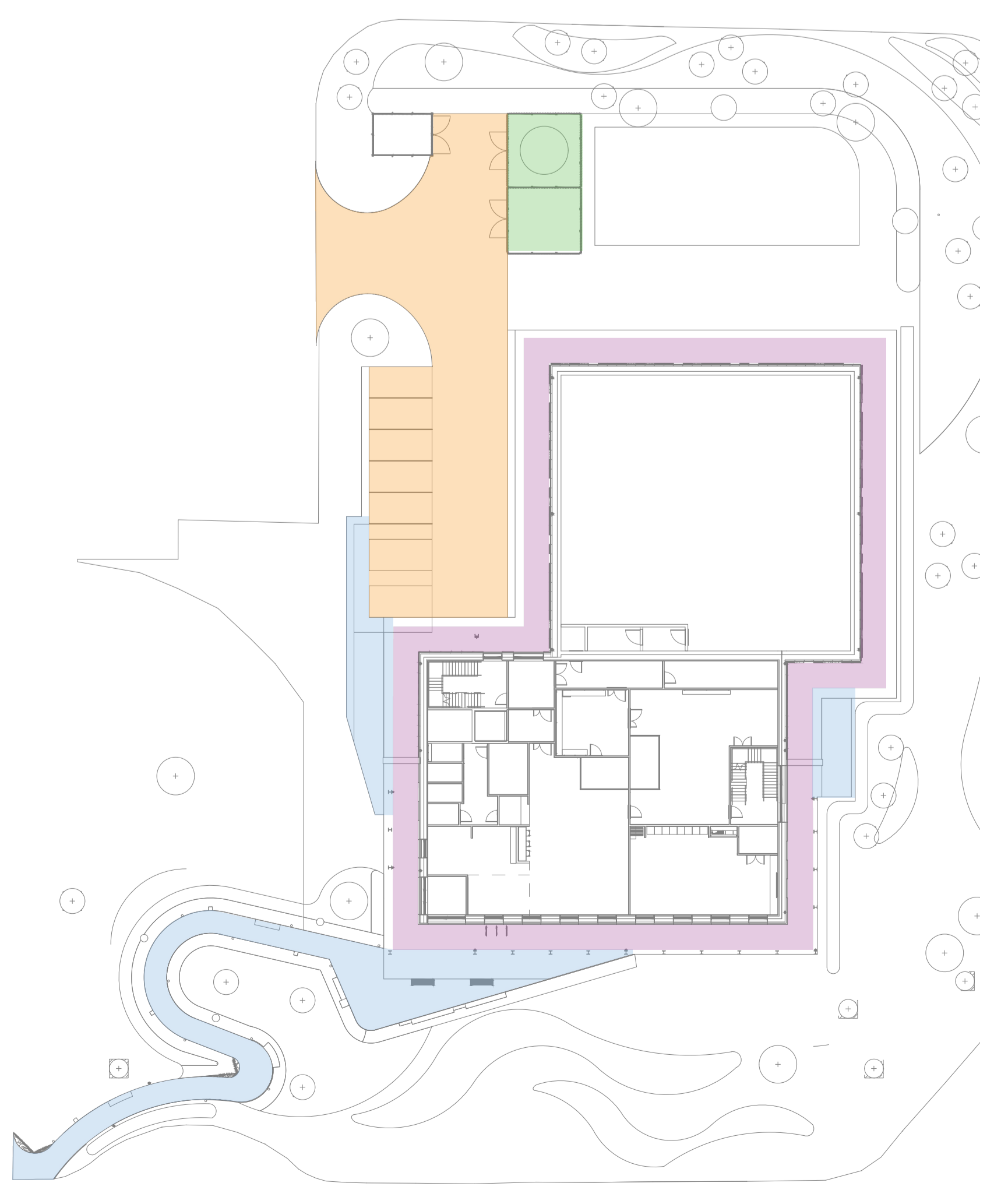
AREA / FUNCTION	HATCH	TARGET ILLUMINANCE	TARGET UNIFORMITY
BUILDING PERIMETER SECURITY LIGHTING		20 LUX	0.25 Uo
PEDESTRIAN WALKWAY		5 LUX	0.25 Uo
CAR PARK AND SLOW MOVING VEHICLE AREAS		10 LUX	0.25 Uo
BIN STORE & HYDRANT COMPOUND		50 LUX	0.40 Uo

**ISOLINE LIGHT SPILL KEY**

	0.5 LUX
	1 LUX



EXTERNAL LIGHTING SPILL LAYOUT



TARGET EXTERNAL LIGHTING LUX LEVELS LAYOUT

PO1	S4 - FOR REVIEW & AUTHORISATION	27.04.2026
REVISION	DESCRIPTION	DATE
	S4 - FOR REVIEW & AUTHORISATION	
<b>WYNNE CONSTRUCTION</b>		
Delivering COLLABORATIVE SUSTAINABLE SOLUTIONS		
WYNNE CONSTRUCTION JOINT ARCHIVE FACILITY		
ELECTRICAL SERVICES - EXTERNAL LIGHTING & POWER STRATEGY		
ENGINEERING SERVICES DESIGN LIMITED		
MECHANICAL & ELECTRICAL CONSULTING ENGINEERS		
SUITE 2B, MARSHLAND HOUSE MARSHLAND ROAD SALE, M33 3AQ		
TEL: 0161 694 4560 EMAIL: ENQ@ESD.LTD.CO.UK WEB: WWW.ESD.LTD.CO.UK		
DATE	RC	01.04.2026
DATE	MK	01.04.2026
DATE	RG	01.04.2026
DATE	A0	01.04.2026
PROJECT	JAf-ESD-ZZ-00-DR-E-9000	PO1