

Cronfa Treftdaeth Heritage Fund

LEGEND

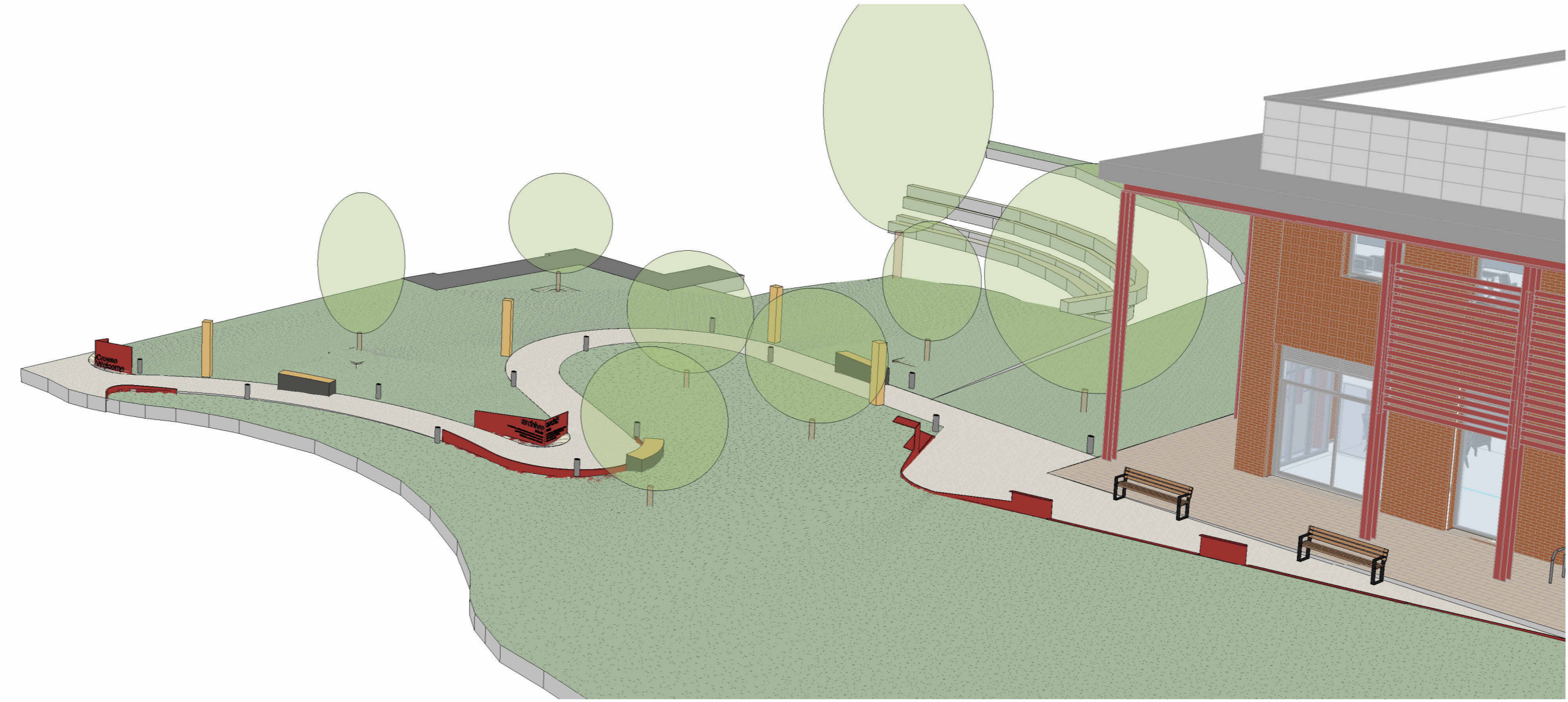
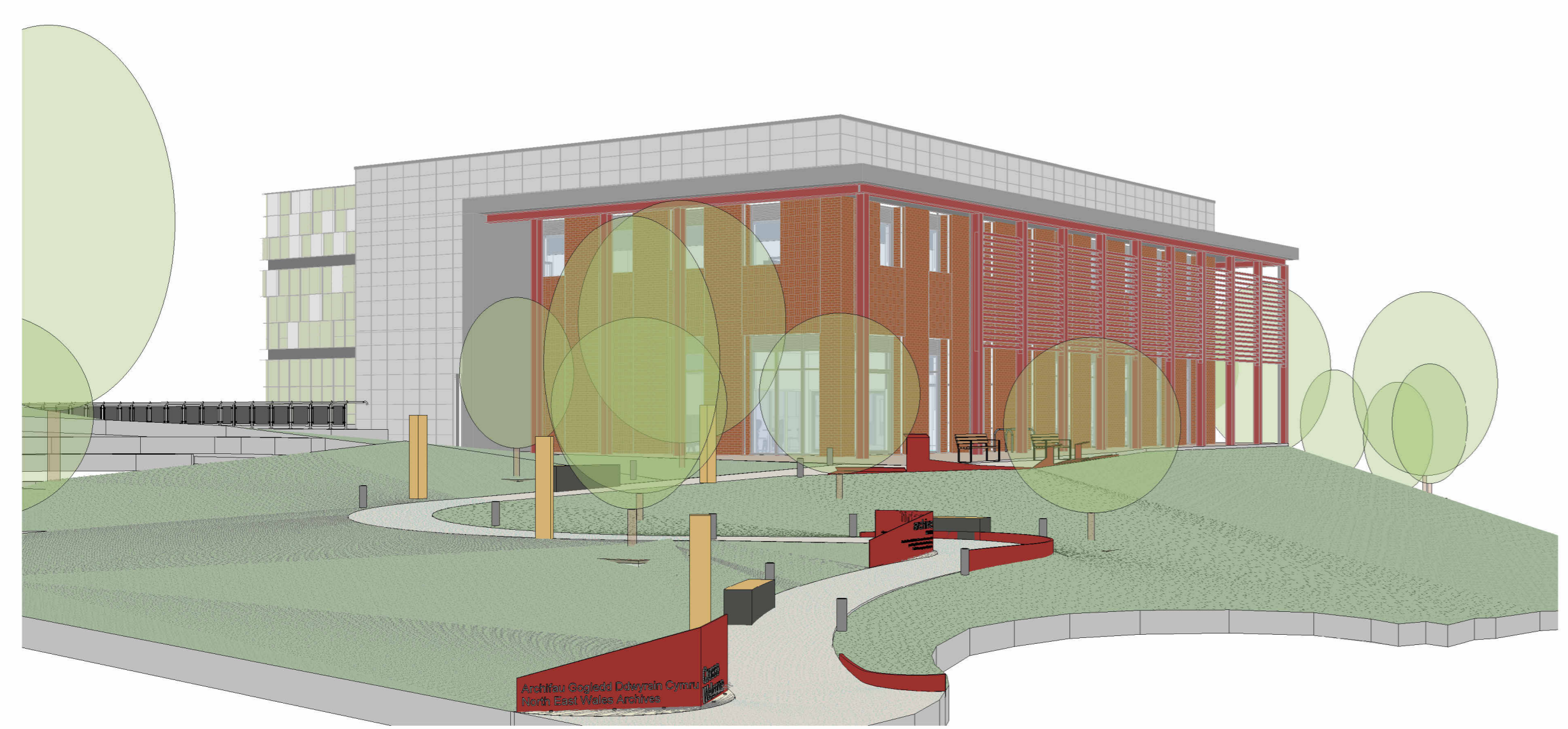
- Existing Tree with RPA - Retained:** Refer to Arboriculture Report for more detailed information.
- Existing Tree with RPA - Removed:** Refer to Arboriculture Report for more detailed information.
- Proposed Tree:** Refer to Detailed Planting Plan dwg 1030 for more information.
- Vehicular Asphalt (Porous):** Vehicular grade tarmac. Refer to Engineers Design and Detail Pack for further details.
- Pedestrian Asphalt:** Pedestrian grade tarmac. Refer to Engineers Design and Detail Pack for further details.
- Resin Bound Gravel (Porous):** Buff / grey colour mix resin bound gravel surfacing with steel edge to tie in with Theatre material palette.
- Pedestrian Paving:** Permeable Dutch Brick Paver in the colour 'Aquila Brown' from Wienerberger or similar approved to tie in with Theatre material palette.
- Loose Decorative Gravel:** Decorative buff coloured gravel to feature sign edging.
- Entrance Feature Signage with up lighting:** Refer to Landscape Features dwg 1031 for further details. Steel edging, polyester powder coated to match architectural palette with floor mounted uplight from Faro Barcelona or similar approved.
- Metal Edging:** Refer to Landscape Features dwg 1031 for further details. Steel edging, polyester powder coated to match architectural palette.
- Mid Path Feature Signage:** Steel edging, polyester powder coated to match architectural palette.
- Edge Integrated Bench:** Integrated seating built into metal edging with timber tops from Logic or similar approved.
- Standalone Bench:** Standalone seating with timber tops from Logic or similar approved.
- Interpretation Bench (with audio):** Refer to Headland drawings for further details.
- Interpretation Inspire Signage:** Refer to Headland drawings for further details.
- Interpretation Totem Poles:** Refer to Headland drawings for further details.
- Interpretation Stand:** Refer to Landscape Features dwg 1031 for further details.
- Habitat Feature: Pole Mounted Bat Column:** Pole-mounted Bat Column from Wildbanks or similar approved.
- Habitat Feature: Bee Bar:** Perennial Planting that attracts pollinators with signage from The Victory Garden of Tomorrow or similar approved.
- Bollard Lighting:** RAL 9005 Jet Black Metal LED Bollard 500mm high Sylvania LED Bollard or similar approved.
- HLF Acknowledgement Paving Inlays:** 5 metal HLF logo paving inlays.

Material Samples:

- Resin Bound Gravel (Porous)
- Pedestrian Paving
- HLF Acknowledgement Paving Inlays

0m 2m 4m 6m 8m
VISUAL SCALE 1:100 @ A1
Notes
 • Drawing is copyright of fenton+reece
 • Only labelled dimensions are to be taken from this drawing. Do not scale from this drawing.
 • Contractor is responsible for taking and checking all dimensions, below ground services and setting out.
 • All elements of design should be checked on site and conflicts reported to responsible designer. **If in doubt ask**

1 Entrance General Arrangement
 1 : 100



P02	Stage 3 Reissue	JL	RF	260424
P01	For Client Comment	JL	RF	260410
Rev.	Revision description	Drawn	Checked	Date

fenton+reece
 www.fentonreece.com | hello@fentonreece.com

Project	
Joint Archives Facility for Flintshire Denbighshire CC	
Title	
Entrance General Arrangement	
Project Status	
RIBA Stage 3	
Drawing Number	Rev.
JAF -FRL -XX -XX -DR -L -1501	P02